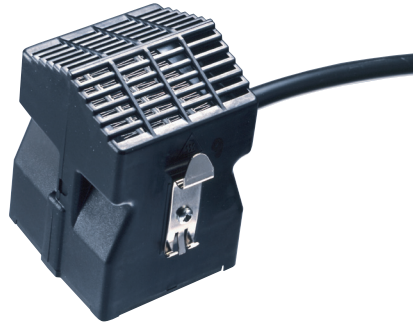


Cabinet Heater Series 60



Features

- High power to size ration
- Light weight
- Easy to fit
- Three power settings
- Independent fan circuit to aid climate cooling

Options

LSFGB300: 35mm DIN Rail clip (EN 50022)

LSFGB301: Side mounting bracket (4xM4)

LSFGB302: Bulkhead mounting bracket (4xM4)

Technical data:

Series 60		LSFGC 3000	LSFGC 3001
Nominal power at 10°	W	200 / 300 / 400	200 / 300 / 400
Nominal input voltage	V	230VAC	115VAC
Nominal input frequency	Hz	50	60
Operating temperature range	°C	-10 to +70°C	-10 to +70°C
Storage temperature range	°C	-40 to +70°C	-40 to +70°C
Fan live time (MTTF at 30°C)	h	329,447	329,447
Fan volumetric flow, approx.	m ³ /h	10	13
Weight, add 35g for bracket	g	275	275
Dimensions	Cross section mm	71 x 70	71 x 70
Length	mm	96,5	96,5
Harness length	mm	240	240
Ingress protection, EN60529		IP20	IP20
Electrical protection class		II	II
Recommended fuse, time delay	A	6,3	6,3
Recommended MCB type B	A	6	6

