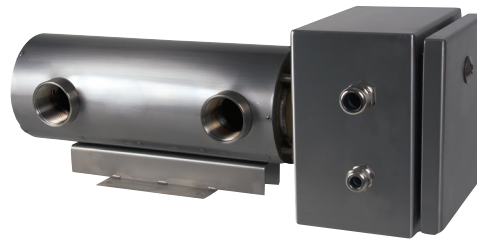


Flow Heater



Application:

NWC glycol pre-heater 4kW - 3x690V, consisting of flange heater mounted in pressure vessel, which is equipped with 1 1/2" in- and outlet, placed in the same side, terminal box with built-in thermostat 20-45°C and temperature limiter 60°C with automatic re-connection. The vessel is equipped with 3/8" airing mounted opposite to the in- and outlet.

The pre-heater is delivered with 20mm insulation and cover in stainless steel plate.

Can be delivered for water or oil; for various wattage and voltage and in different sizes according to customer's requirements.

Part No.:

217720001

Technical data:

Specific watt load:	12W/cm ²
Medium:	Water/Glycol
Material,	
vessel:	AISI 304
heating elements:	AISI 316
flange:	Brass
cover:	AISI 304
terminal box:	AISI 304
Dimension,	
heating elements:	Ø10mm
Protection class:	IP 66
Design pressure:	10 bar
Test pressure:	16 bar
Pres. loss in vessel at 85 l/min and -35°C:	approx.: 65Nm ² (6,6mm WC)

Control box consisting of:

Relays:

2 off 3x690/230V

Thermostat type:

EGO 55.13001.170

UL-approved: 1 off 1-pole, 16A-400V

Temperature limiter type:

EGO 55.13111.120

UL-approved: 1 off 1-pole, 16A-400V

Various terminal blocks UL-approved

